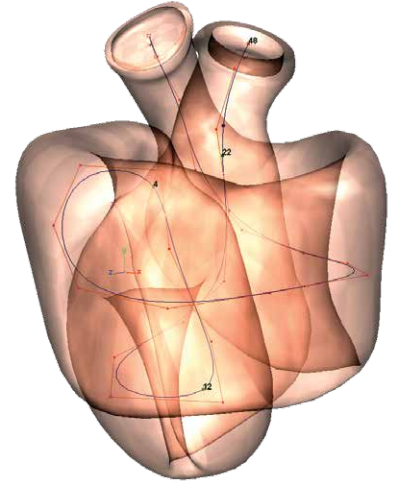


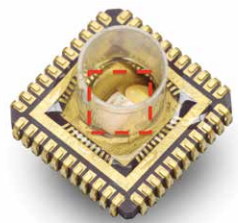
Caltech

Interested in Grad School?
Join the New Department of

Medical Engineering



Apply by **December 15, 2014**



100% financial support guaranteed throughout the entire PhD program*

**Pending satisfactory academic and research progress*

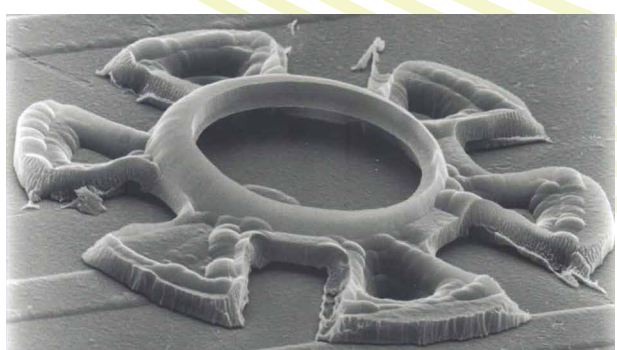


What our students are saying...

“ One of the main reasons I chose Caltech is its small, close-knit community, where a high concentration of talent collectively breaks the boundaries of modern science. ”

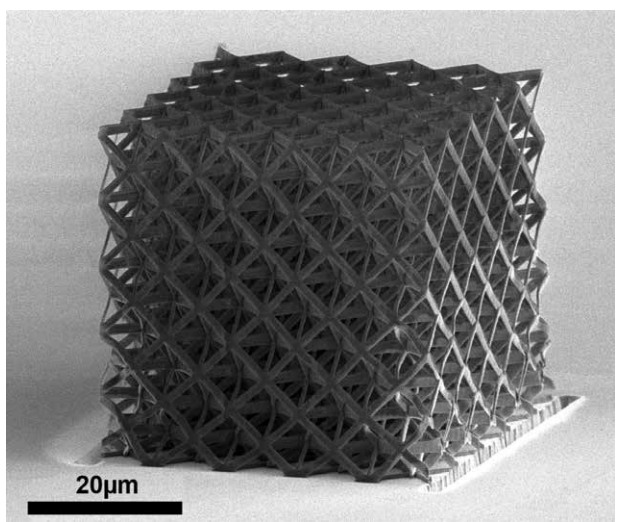
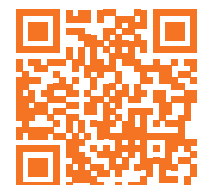
“ The faculty here have first-class backgrounds in different engineering fields, and the program offers various opportunities for the students to collaborate with medical practitioners in finding medical solutions. ”

“ Caltech embodies interdisciplinary research at its core where students may work with faculty in any department and cross-department collaborations occur at nearly every corner. ”



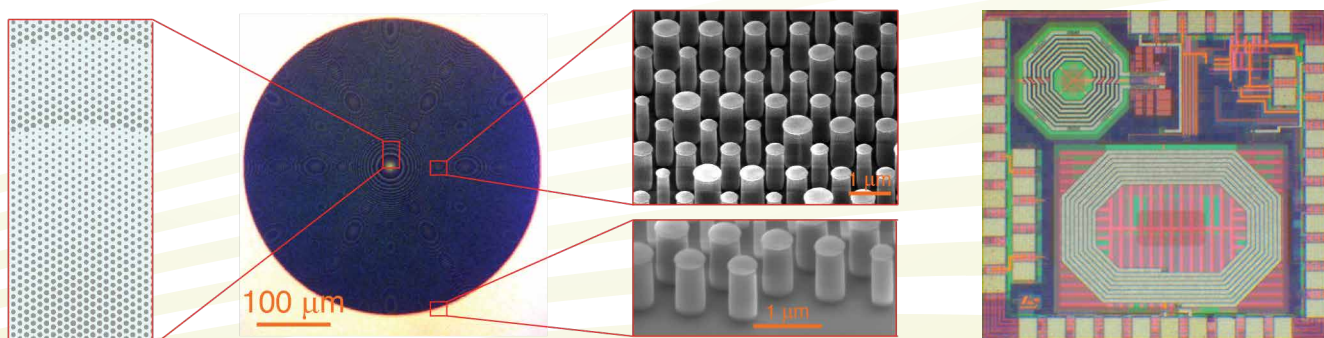
Research areas

- Biomedical Materials
- Medical Nano Imaging and Sensing
- Nanoscale Medical Devices
- On-Chip Diagnostics



Sample projects

- Spinal Cord Implants
- Cardiovascular sensors and health monitoring
- Noninvasive photonic metabolites and insulin detection
- Wireless intraocular sensors and implants



Medical Engineering (MedE) faculty come from a broad range of disciplines including aerospace, applied physics, biology, chemistry, chemical engineering, electrical engineering, materials science, and mechanical engineering.

Our MedE faculty work on real world problems. Current research involves collaborators with major medical institutions and clinics including City of Hope, Huntington Medical Research Institutes, University of California, Los Angeles, University of California, San Francisco, University of California, San Diego, and University of Southern California.

mede.caltech.edu

Working at the edges of fundamental science to invent the technologies of the future.